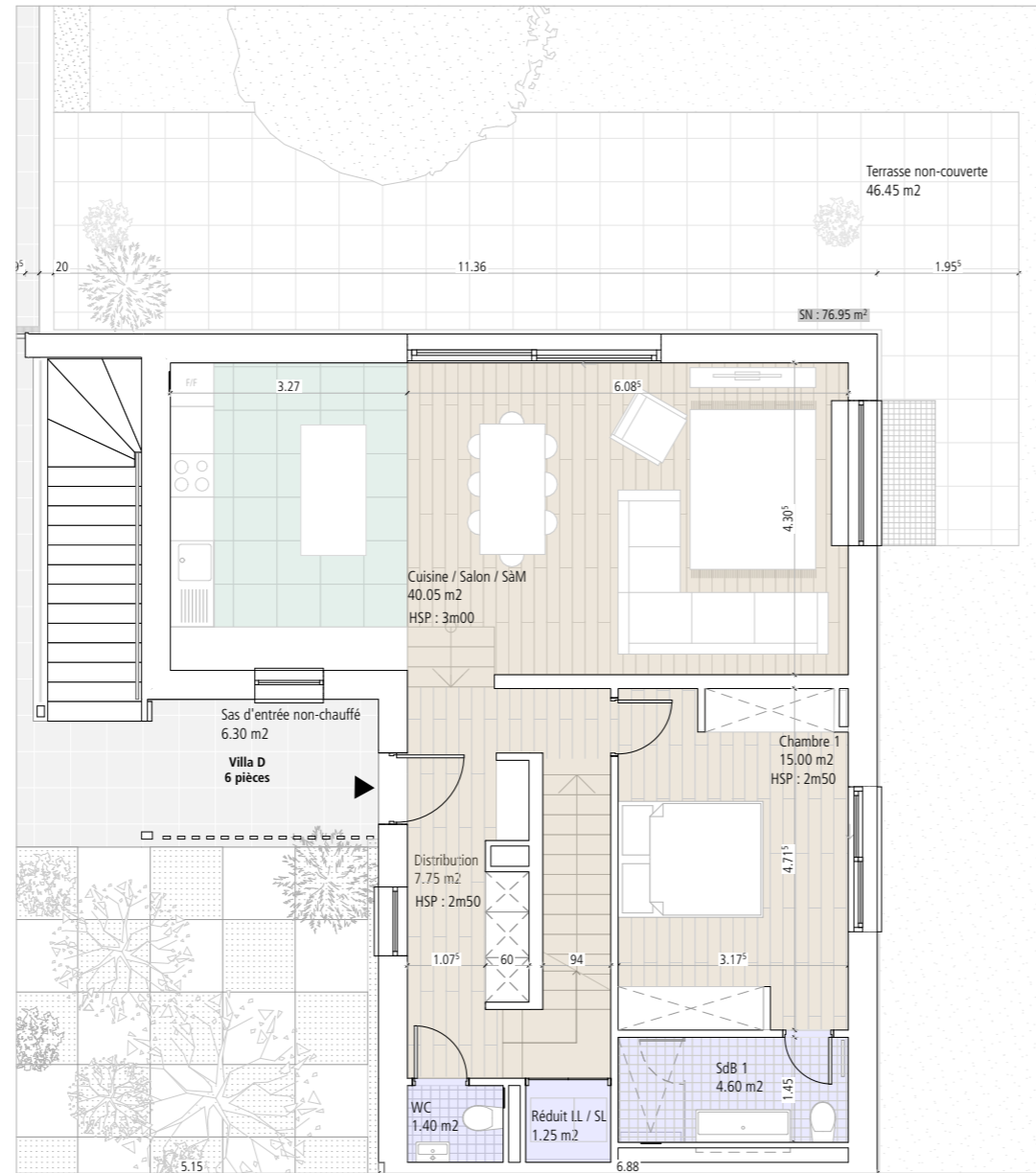


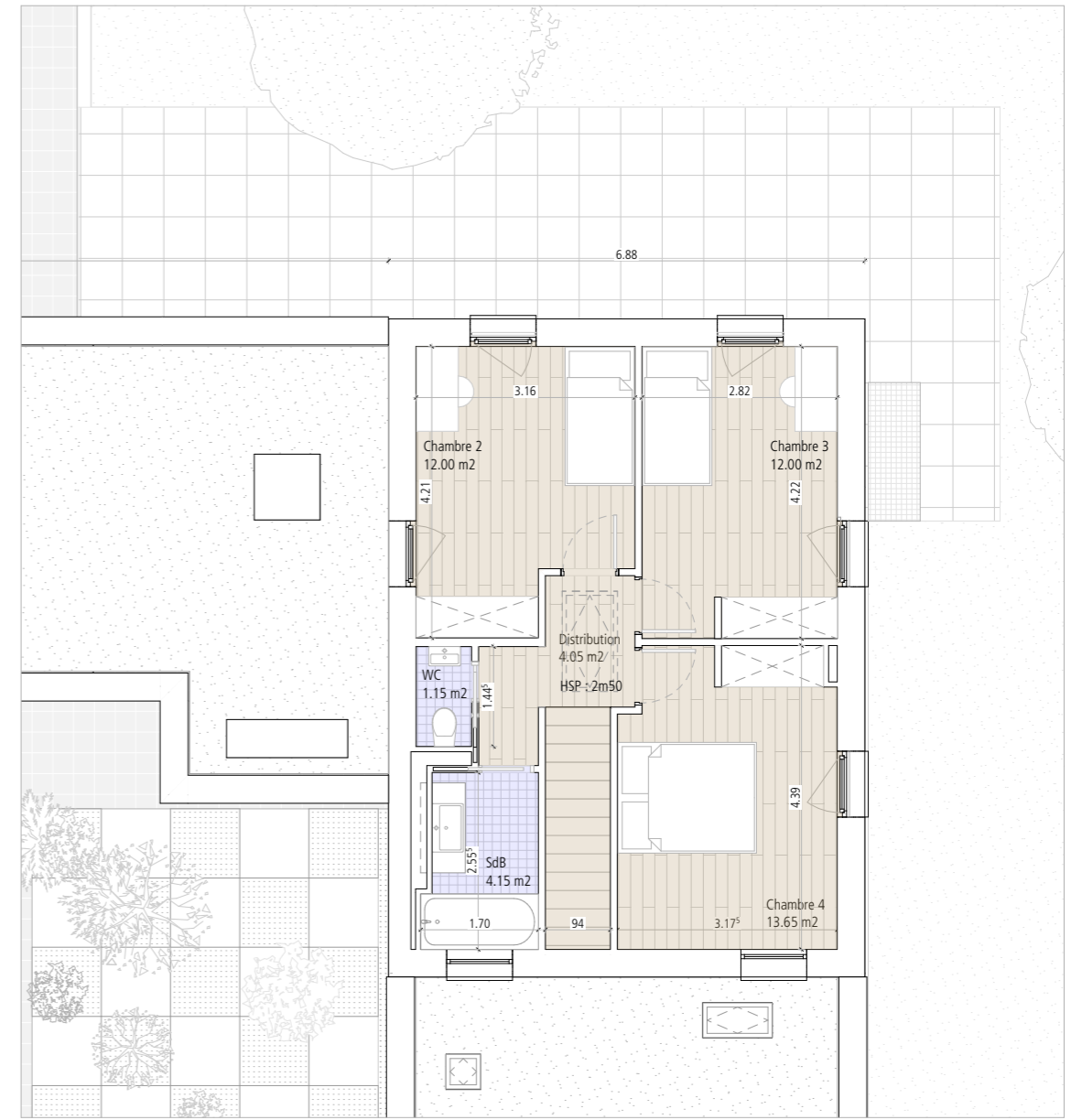
Plan du Sous-sol

Surface de plancher	50.00m ²
Surface nette	40.30m ²



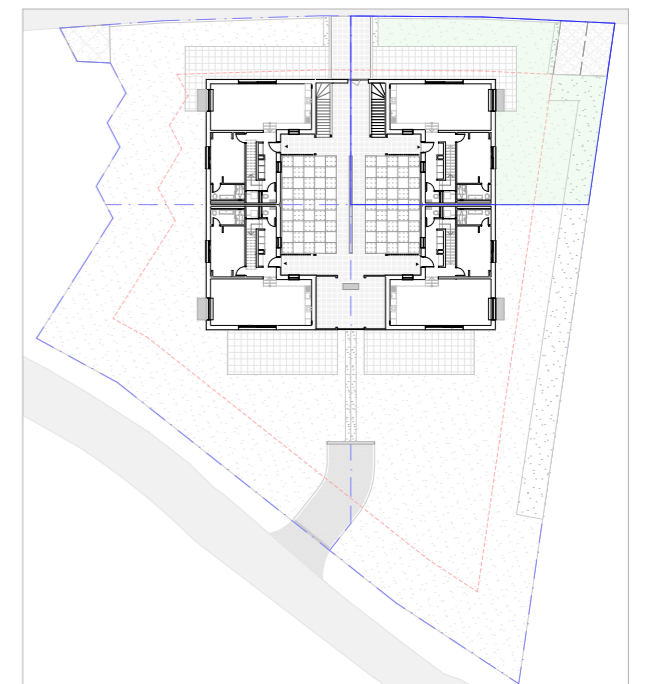
Plan du Rez-de-Chaussée

Surface brute de plancher	96.00m ²
Surface nette	76.95m ²
Surface utile extérieure	52.75m ²



Plan du 1e étage

Surface brute de plancher	65.50m ²
Surface nette	47.30m ²



Villa D

Surface de la parcelle individuelle	401.05 m ²
Surface jardin	159.00m ²
Surface brute de plancher (Hors Sol)	161.50 m ²
Surface de plancher (Sous-sol)	48 m ²
Surface nette totale (Hors Sol)	124.25 m ²
Surface nette totale (Sous Sol)	40.20 m ²